



# Motocaddy CONNECT Smart Display Instruction Manual

EN

**REGISTER ONLINE**

[www.motocaddy.com/warranty](http://www.motocaddy.com/warranty)



Distance Measurement Device (DMD) features are legal to use when local USGA and R&A rule 14-3 is in effect. Always check local and competition rules prior to commencing play



Visit [www.motocaddy.com/instructions](http://www.motocaddy.com/instructions) for other Motocaddy instructions including translations

# Contents

## Contents Table

Motocaddy CONNECT Smart Features .....	3
Disabling Smart Features / Bluetooth Range .....	4
Installing the Motocaddy Smartphone App .....	5
Pairing with your trolley .....	6
GPS Mode / Power Save Mode.....	7
Automatic Hole Advancement / Units of Measure .....	8
Push Notifications / Notification Settings.....	9
Notification Stacking & Grouping / Standalone Notifications.....	10
Using the Smart Display Modes / Using the Clock.....	11
Round Timer / Distance Measurement.....	12
Twilight Mode / OTA Updates.....	13
Language Settings / Closing the Motocaddy App.....	14
FCC Statement .....	15



## Introduction to the Motocaddy CONNECT Smart Features

The Motocaddy CONNECT trolley range can be linked to the Motocaddy GPS app via a Bluetooth® connection on any compatible smartphone; allowing the trolley's Smart Display to be used in place of a conventional GPS; including front, middle and back of green distances along with hole information, distance measurement, clock and round timer. Offering the ultimate in on-course connectivity, the CONNECT enabled trolleys can also receive push alerts for text messages, email, missed calls and other compatible apps.

The following pages contain an overview of how to use the wide-range of integrated features. For more detailed instructions including FAQs and updates, visit [www.motocaddy.com/support](http://www.motocaddy.com/support).

**IMPORTANT : Distance Measurement Device (DMD) features are legal to use when local USGA and R&A rule 14-3 is in effect. Always check local and competition rules regarding the use of DMD and Push Notifications prior to commencing play.**

## Disabling Smart Features

Motocaddy CONNECT enabled trolleys can be used without connecting to the Motocaddy app.

When the trolley battery is connected, the Smart Display will initialise and display the time, date and "SEARCHING OPEN APP" message (fig. 1). The Smart Display will continue to display this message until a Bluetooth connection has been made. The trolley can be used in this state with minimal effect on battery capacity.

It is possible to hide the 'Search' message (fig. 2) by pressing the centre button or turn off the Smart Display altogether by holding down the centre button for five seconds (fig. 3).

**IMPORTANT : CUBE CONNECT users can power on the Smart Display by pressing the centre button for 1 second. It is recommended that CUBE CONNECT users should always power off their Smart Display when not in use to maximise battery life.**

## Bluetooth Range

The Motocaddy CONNECT Bluetooth connection has a range of up to 30 metres (depending on phone model). If the phone goes outside of this range the Smart Display will show "OUT OF RANGE". If the phone comes back in to range within 30 minutes, it will automatically re-connect. If it remains out of range for more than 30 minutes, the Smart Display will automatically power off.



Fig 1



Fig 2



Fig 3

## Installing the Motocaddy Smartphone App

It is necessary to install the Motocaddy app to utilise the Motocaddy CONNECT Smart Features. The Motocaddy app utilises the GPS hardware on your smartphone to provide distance and hole information on the golf course.

**The Motocaddy app is compatible with iPhone 4s or newer (running iOS 9.0 or later) & Samsung Galaxy S4 or newer (running Android 4.3 or later). Please note, not all Bluetooth enabled mobile phone handsets are compatible with the Motocaddy CONNECT Smart Display and pairing for other devices cannot be guaranteed.**

To install the 'Motocaddy GPS' app, search for "Motocaddy" on either the Apple App Store or on Google Play.

Apple Devices



Android Devices



Once installed, select the Motocaddy GPS app and it will load the registration screen. When using the app for the first time, you will be prompted to allow the app to access your location and it is important that this is enabled to use GPS features.

We recommend that you complete the app registration process to allow us to keep you informed about future updates to both the app and Motocaddy CONNECT smart functionality. Please note that completing the app registration does not register the trolley.

# Smart Display - Pairing with your trolley

## Pairing with your trolley

It is necessary to pair the Smart Display with a compatible smartphone to utilise the Motocaddy CONNECT GPS and Notification features. Once your phone has been paired for the first time, it will automatically re-connect when the Smart Display is powered on, the phone is within range and the Motocaddy app is open. You will need to enable Bluetooth on your mobile device.

To pair your phone with your Motocaddy CONNECT trolley:

1. Plug the battery in to the trolley. The Smart Display will initialise and show "Searching open app" (fig. 1)
2. Open the Motocaddy app on your phone and navigate to the 'Settings' page
3. Select the PAIR button (fig. 2). The "PAIR TO TROLLEY" option will now show "SEARCHING"
4. Once the phone and trolley have found each other, the CONNECT Smart Display will show a unique 6 digit code (fig. 3) and a pop-up box will appear on the app to request this number
5. Enter the 6 digit trolley code into the app
6. Once accepted, the Smart Display will show the user's phone name (fig. 4) and the app will show "FORGET DEVICE"



Fig 1



Fig 2 - App Settings



Fig 3



Fig 4

## Using GPS Mode

To use your Motocaddy CONNECT trolley in GPS mode, the Smart Display must be paired and connected to a compatible smartphone which has the Motocaddy GPS app installed.

To start a round in GPS mode, open the Motocaddy app on your phone and follow these steps:

1. Select "Play Golf" from the home screen
2. The app should now show a list of local courses (if no local courses are shown, please check that location services have been enabled). It is also possible to manually search for a course using the search box at the top of the page (location services must still be enabled to receive distances on the course)
3. Select the required course and wait for the 1<sup>st</sup> hole to load within the app
4. Once loaded, the Motocaddy CONNECT Smart Display will update to show GPS information (fig. 1)



Fig 1

## Power Save Mode

By default, the app will load in 'Power Save' mode to minimise data and phone battery usage. It is recommended to use the app in 'Power Save' when connected to a Motocaddy CONNECT trolley.

More detailed course information, plus additional features including an aerial view of the hole, shot planning and greenside information is available within the app's 'Map View'.

It is possible to alter the app's default setting to load the 'Map View' within the app settings (fig. 2).

**NB: Map View is only available once you have completed the in-app registration process.**

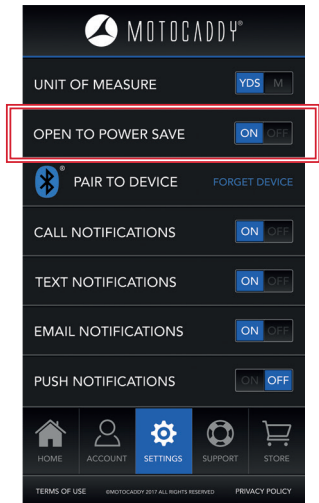


Fig 2 - App Settings

# Smart Display - Automatic Hole Advancement / Units of Measure

## Automatic Hole Advancement

The Motocaddy app will automatically advance to the next hole when you move towards the next tee. The Motocaddy CONNECT Smart Display may show "Loading" while the app updates (fig. 1).

The app may not always automatically advance to the next hole. This can be caused by a number of factors including an altered tee position or incorrect changeover point.

It is possible to manually advance through the holes using either the app or the Smart Display.

To manually advance using the app, press the left (previous hole) and right (next hole) arrows at the bottom of the 'Power Save' or 'Map View' screens (fig. 2).

To manually advance directly from the trolley handle, press the left (previous hole) and right (next hole) buttons located beneath the Smart Display (fig. 3).

**Please be aware that holes will advance sequentially from the 1<sup>st</sup> hole onwards. If you are commencing play at a different location, you will need to manually advance to the required hole.**

## Units of Measure

Distance readings within the Motocaddy app and Smart Display can be displayed in both yards and metres. This can be set within the app settings.



Fig 1

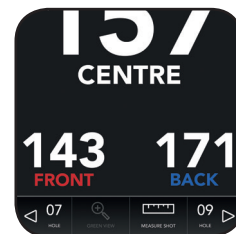


Fig 2 - App Power Save Mode



Fig 3



## Smartphone Push Notifications

The Motocaddy CONNECT Smart Display can be set to provide alerts for a wide-range of push notifications including new email, text messages, missed calls and other compatible apps including WhatsApp and Facebook.



To use the Motocaddy CONNECT notifications feature, the Smart Display must be paired and connected to a compatible smartphone which has the Motocaddy GPS app installed. It is also possible to use the Motocaddy CONNECT GPS mode without enabling push notifications.

**IMPORTANT : Always check local and competition rules prior to enabling push notifications.**

## Notification Settings

It is possible to preset which notification types are sent to the Motocaddy CONNECT Smart Display. Simply open the Motocaddy app and select the required notification types within the 'Settings' menu. (fig. 1).

There are also other app specific notification settings within your phone that need to be enabled for the notifications to work. For a full list of compatible apps, plus individual app notification settings (including the 'Push Notifications' option), please visit [www.motocaddy.com/support](http://www.motocaddy.com/support).

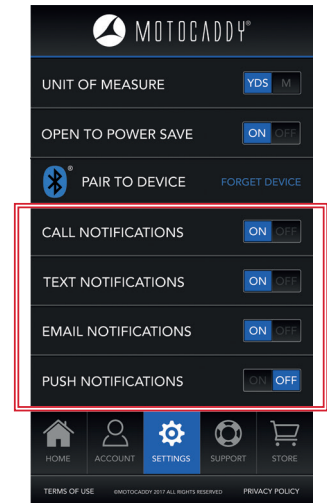


Fig 1 - App Settings

## Notification Stacking & Grouping

Notifications will stack on the Motocaddy CONNECT Smart Display, with the most recent notification visible.

To clear a notification from the Smart Display, press the middle button (fig. 1). This will need to be repeated for each notification received.

Once all notifications have been cleared, the Smart Display will revert to the GPS screen (if "Play Golf" has been selected) or time and 'searching' message (if "Play Golf" has not been selected).

If you are using an iPhone with the Motocaddy CONNECT trolley, notifications will be grouped so the Smart Display shows the number of missed calls, emails or text messages that you have received from each contact (fig. 2). Grouping is not currently available for Android users and individual notifications will be shown for each alert.

## Using Notifications without the Motocaddy App

Once paired, the Motocaddy CONNECT Smart Display has been developed to allow Push Notifications to be received without the Motocaddy app being open. This allows the trolley to be used for Time, Date and Notification features without needing to have the app open.

To stop receiving Push Notifications, please disable Bluetooth on your mobile device, unpair your mobile device, update your mobile notification settings or switch off the Smart Display.

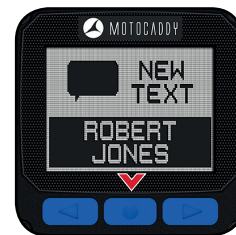


Fig 1



Fig 2

## Using the Smart Display Modes

The Motocaddy CONNECT Smart display can show three different function screens - GPS Mode, Clock/Round Timer and Distance Measurement.

Press the centre 'Change Mode' button to scroll through these different modes (fig.1).

## Using the Clock

The date and time shown on the Motocaddy CONNECT Smart Display (fig. 2) will be automatically set once you have paired your trolley with a phone for the first time. The date and time will be displayed based on your phone's date and time settings and can be shown in both 12 and 24 hour formats.

Once an initial pairing has been completed, the trolley will continue to record time based on the most recent pairing for up to 7 years without re-connection.

The date and time cannot be set manually through the Motocaddy CONNECT Smart Display.



Fig 1



Fig 2

# Smart Display - Round Timer / Distance Measurement

## Round Timer

The round timer starts counting up as soon as you select a course and enter 'Play Golf' mode. It can be paused and reset from the 'Map View' or 'Power Save' modes within the app (fig. 1).

The round timer can also be paused and reset directly on the Smart display whilst on the time and pace screen using the left (pause) and right (reset) buttons (fig. 1b).

## Distance Measurement

The shot distance can be controlled from either the Motocaddy GPS app (fig. 2a) or directly using the Smart Display.

On the Measure Shot screen, use the left button to start and reset the shot distance measurement (fig. 2b).

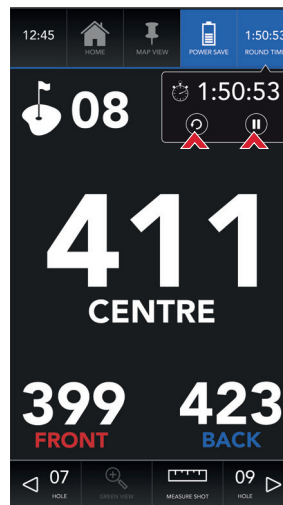


Fig 1a - Power Save mode

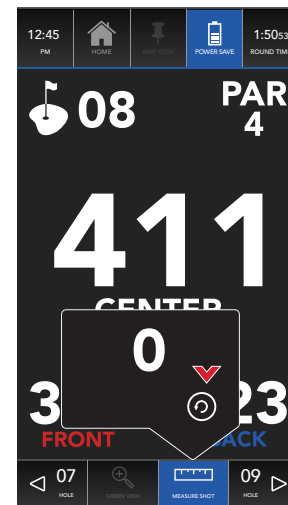


Fig 2a - Power Save mode



Fig 1b



Fig 2b

### Twilight Mode

Twilight mode can be enabled from the settings page within the Motocaddy app and alters the Motocaddy CONNECT Smart Display to optimise for viewing in low light and bright sunlight.

### Over The Air (OTA) Updates

The Motocaddy app has been developed to offer 'Over The Air' (OTA) updates to the Motocaddy CONNECT Smart Display, allowing the trolley software to be seamlessly updated with exciting new features and upgrades as soon as they become available.

Once a Bluetooth connection has been established, you will receive a notification on the Motocaddy app if a firmware update is available for your Motocaddy CONNECT trolley.

Further information and instructions regarding OTA updates is available at [www.motocaddy.com/support](http://www.motocaddy.com/support).

### Language Settings

The Motocaddy app is available in five languages (English, French, German, Spanish and Swedish) and is set automatically based on your phone's default language and region settings.

### Closing the Motocaddy App

Once you have completed your round, you can close the app to stop location tracking and data usage.

*APPLE iOS : Double-press the 'Home' button to see your most recently used apps. Swipe right or left to find the Motocaddy GPS app. Swipe up on the app preview to close it.*

*ANDROID : Press the 'Recent Applications' button to see your most recently used apps. Swipe up or down to find the Motocaddy GPS app. Swipe left or right on the app preview to close it.*

## FCC Statement

1. This device complies with Part 15 of the FCC Rules.

Operation is subject to the following two conditions:

- (1) This device may not cause harmful interference, and
- (2) This device must accept any interference received, including interference that may cause undesired operation.

2. Changes or modifications not expressly approved by the party responsible for compliance could void the user's authority to operate the equipment.

## FCC Radiation Exposure Statement:

The device has been evaluated to meet general RF exposure requirement. The device can be used in portable exposure condition without RF striction.  
NOTE: This equipment has been tested and found to comply with the limits for a Class B digital, pursuant to Part 15 or the FCC Rules.

These limits are designed to provide reasonable protection against harmful interference in a residential installation. This equipment generates, uses and can radiate radio frequency energy and, if not installed and used in accordance with the instructions, may cause harmful interference to radio communications, However, there is no guarantee that interference will not occur in a particular installation. If the equipment does cause harmful interference to radio or television reception, which can be determined by turning the equipment off and on, the user is encouraged to try to correct the interference by one or more of the following measures:

- (1) Reorient or relocate the receiving antenna
- (2) Increase the separation between the equipment and receiver
- (3) Connect the equipment into an outlet on a circuit different from that to which the receiver is connected
- (4) Consult the dealer or an experienced radio/ TV technician for help

**CAUTION : RISK OF EXPLOSION IF THE SMART DISPLAY CELL BATTERY IS REPLACED BY AN INCORRECT TYPE. DISPOSE OF USED BATTERIES ACCORDING TO THE INSTRUCTIONS.**





Motocaddy Ltd, Units 15 - 18 Stansted Distribution Centre,  
Start Hill, Great Hallingbury, Hertfordshire, CM22 7DG, United Kingdom

t: +44 (0)1279 712 370 e: [info@motocaddy.com](mailto:info@motocaddy.com) w: [www.motocaddy.com](http://www.motocaddy.com)



We are dedicated to protecting the environment and encourage the recycling of Motocaddy products through a free collection and disposal service. To find out more or to locate your nearest Motocaddy recycling point, please contact us through our website.

MC.18.51.002

Apple, the Apple logo, and iPhone are trademarks of Apple Inc., registered in the U.S. and other countries. App Store is a service mark of Apple Inc.

Android and Google Play are trademarks of Google Inc.

Samsung and Galaxy S are trademarks of Samsung Electronics Co. Ltd.

The Bluetooth® word mark and logos are registered trademarks owned by the Bluetooth SIG, Inc. and any use of such marks by Motocaddy is under license. Other trademarks and trade names are those of their respective owners.